



UNSCRAMBLING / ACCUMULATING TABLES

The accumulating and unscrambling tables are available in 5 sizes. Unscramblers are positioned at the start of the production line for inflow to containers. Accumulators can be located at any point on the production line where either smooth transfer between machines and / or accumulation is required.

These rotary tables, equipped with stainless steel turntables are designed to provide smooth unscrambling or accumulating of a broad variety of containers such as bottles, jars, cans, and vials of plastic, glass or metal.

Models UT unscramblers are positioned at start of conveyORIZED production line for imparting initial flow to containers. Models AT accumulators can be located at any point on the production line where either smooth transfer machines and/or accumulation is required. Both Unscramblers and Accumulators are available with turntable diameters of 24" (610mm), 36" (914mm), 42" (1067mm), and 48" (1219mm).

Precision construction throughout with particular attention to transfer points eliminates the problems in handling small or large containers. Adjustable stainless steel spring guides assure complete feeding and discharge of all containers. The turntables are constructed of heavy gauge stainless steel, generously by anti-friction ball bearings. The machine base is stainless steel and fully enclosed with an access door.



Container Range: From 1/2" (13mm) to 3 3/4" (95mm) diameter

Container Range: From 1" (25mm) to 5 7/8" (149mm).

Working Service Height: Adjustable jackscrews from 33" (838mm) to 37" (939mm) Floor Space Below: 1/2" (952mm), 21 1/2" (546mm) square.

Turntable Loading Shelf: 20" (508mm) wide x 17 1/2" (444mm) long.

Electricals: 1/2 h.p. motor, switch, 115V; 60Hz; 1Ph., SCR Infinitely Variable Speed Controller.

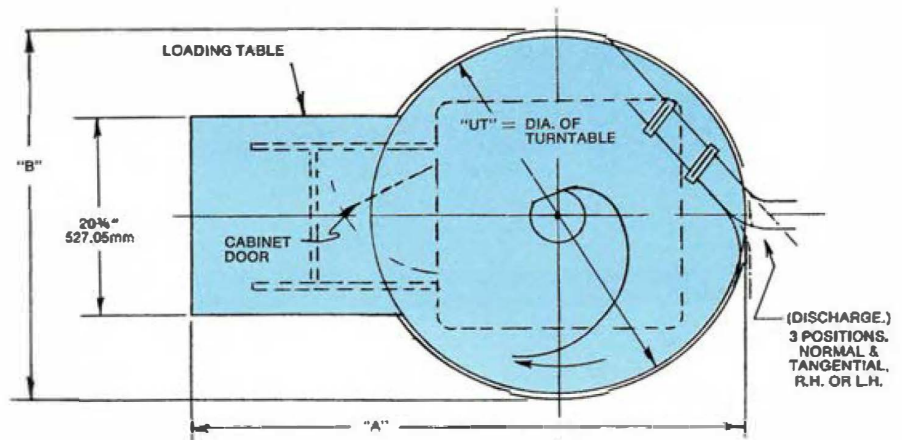
Rotation: Clockwise Standard

Dimension and Weights:

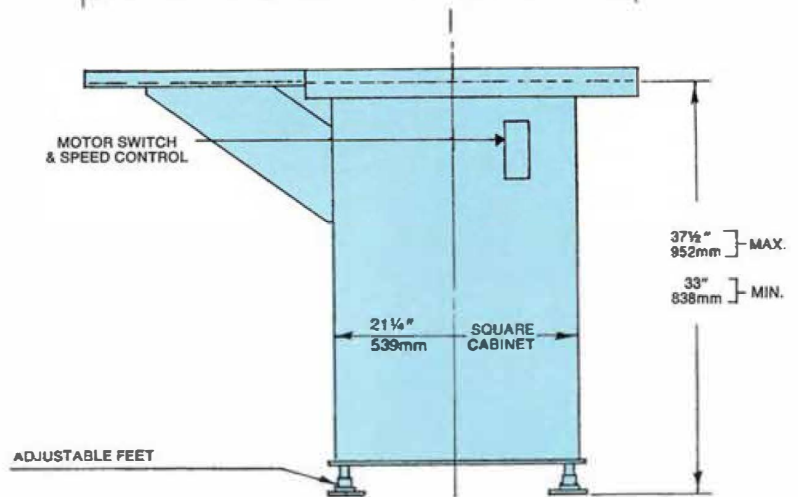
Set Up			Crated				
Model	Width	Depth	Net	Width	Depth	Height	Gross
UT24	See drawings below		225 lbs. 102 kg.	60" 1524mm	45" 1143mm	51" 1295mm	400 lbs. 181 kg.
UT30			275 lbs. 125 kg.	65" 1651mm	50" 1270mm	51" 1295mm	525 lbs. 238 kg.
UT36			300 lbs. 136 kg.	65" 1651mm	50" 1270mm	51" 1295mm	585 lbs. 249 kg.
UT42			335 lbs. 152 kg.	65" 1651mm	50" 1270mm	51" 1295mm	585 lbs. 249 kg.
UT48			400 lbs. 181 kg.	65" 1651mm	63" 1600mm	55" 1397mm	780 lbs. 354 kg.
AT24			225 lbs. 102 kg.	60" 1524mm	45" 1143mm	51" 1295mm	400 lbs. 181 kg.
AT30			264 lbs. 120 kg.	65" 1651mm	50" 1270mm	51" 1295mm	514 lbs. 233 kg.
AT36			292 lbs. 132 kg.	65" 1651mm	50" 1270mm	51" 1295mm	542 lbs. 246 kg.
AT42			325 lbs. 147 kg.	65" 1651mm	50" 1270mm	51" 1295mm	575 lbs. 261 kg.
AT48			360 lbs. 163 kg.	60" 1651mm	63" 1600mm	55" 1397mm	740 lbs. 336 kg.

Optionals:

- Tilting Loading Shelf
- Plexiglas hood
- Counterclockwise rotation
- Other electrical specifications available
- Larger and smaller containers may be handled with optional change parts.

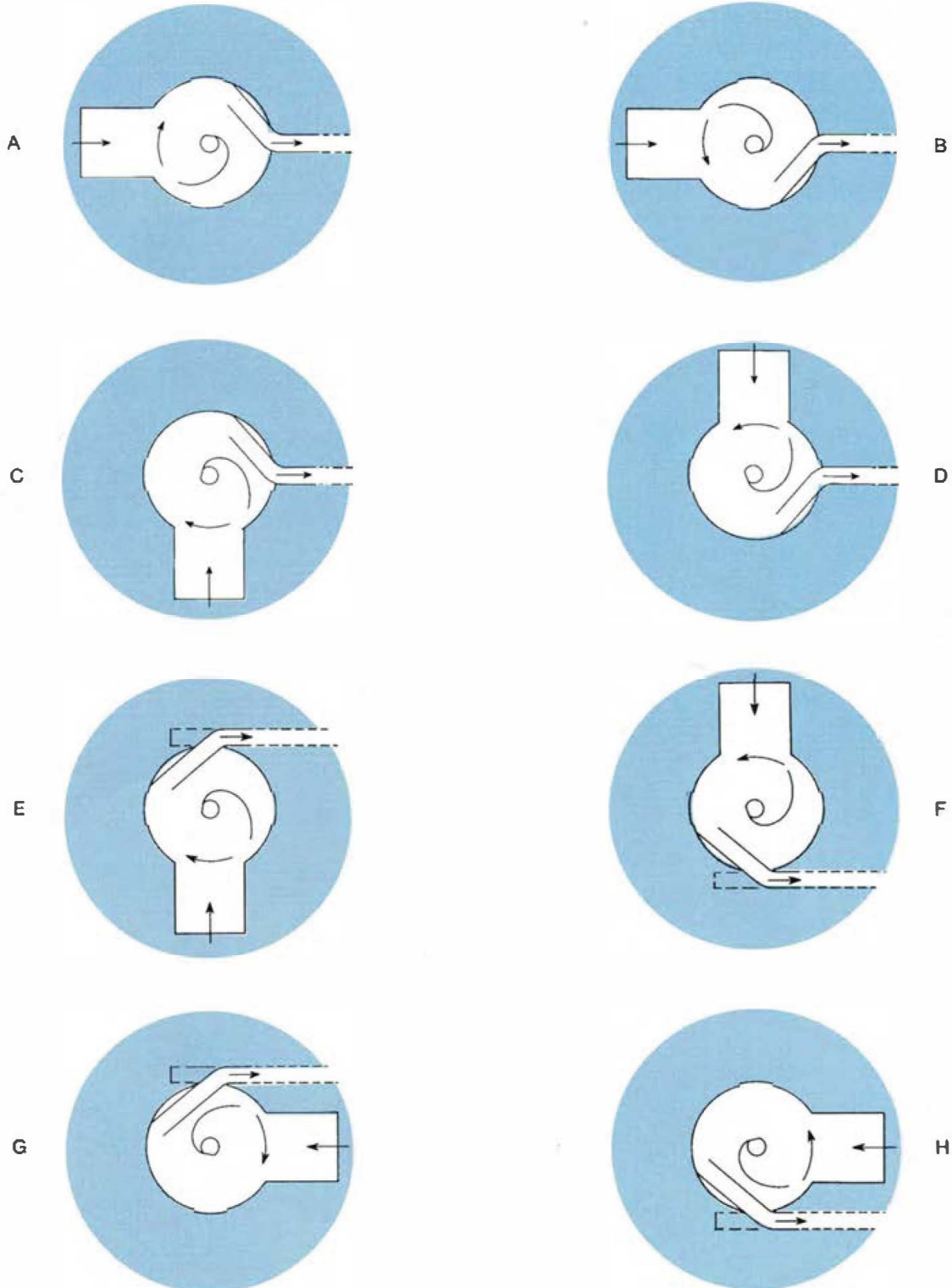


UT	DIM "A"	DIM "B"
48	64" 1645mm	48 1/2" 1242mm
42	58 1/2" 1485mm	42 1/8" 1089mm
36	52" 1321mm	36 1/8" 937mm
30	45 1/8" 1146mm	30 1/8" 784mm
24	42 1/8" 1072mm	25 13/32" 645mm



Transfer Arrangements

Dotted lines show conveyor position



Since 1919, Cozzoli Machine Company has been an international leader in the design, manufacture, distribution and service of precision packaging machine systems. Beyond design and manufacture, we support you with an extensive parts inventory and factory trained service technicians to ensure your complete satisfaction. No matter how small or how large your investment in Cozzoli machines, we are committed to protecting your investment with resources and services worldwide.