

# *Innovative High Performance Monoblock Equipment*

## CR200/400

Cozzoli's Model CR200/400 provides continuous-motion filling and stoppering of liquid pharmaceuticals. Offering production speeds up to 200 and 400 containers per minute respectively, this machine performs with outstanding volumetric accuracies of  $\pm 0.5\%$  of fill volume, or better, with either full or partial insertion of stoppers.

### FEATURES

Production and cost saving features include compact size, machine taking up less than 46 sq. ft. of floor space, quick and easy changeover, and a vibratory bowl handling stopper sizes of 13 to 20mm or 20 to 28mm. When used with laminar flow, the CR400's open flow-through design of the central star-wheel significantly lowers particle counts to well under GMP standards for use in Class 100 cleanrooms.

This microprocessor controlled machine features a stainless steel exterior with all liquid contact parts fabricated of 316 stainless steel and medical grade silicone to accommodate sterile requirements. It also provides missing container, make-up and back-up detection systems.

### OPERATING PRINCIPLE

Containers enter the machine via the infeed conveyor, where they are transported single file into a Delrin timing screw where they are precisely spaced into star wheel pockets. Containers are then transferred into a larger main starwheel where the filling operation occurs. After filling, containers travel to the exit starwheel for stopper positioning and insertion. The continuous motion handling of the containers reduces machine wear, and provides for gentle handling of the containers.

### STANDARD FEATURES

- Syringe Assemblies
- Nozzle Assemblies
- Tygon Tubing
- 1 Set of Vial Change Parts
- Vibratory Bowl Stopper Feed Assembly
- Stopper Delivery Assembly
- Valve Assemblies
- Down Vial Eliminator
- Upstream Make Up Sensor System
- Downstream Back Up Sensor System
- Electronic Digital Rate Indicator (LED)
- 9' Center to Center Conveyor Assembly
- 303/304 Stainless Steel Exterior Construction
- Microprocessor Control
- DC Machine Drive
- NEMA 4, 220V, 60Hz, 1 Ph Electrical
- Full Color Operator Panel
- Password Protected Operating Parameters

### OPTIONAL FEATURES

- Lexan Enclosure
- Additional Change Parts
- Additional Nozzle Sizes
- Ethernet PLC Upgrade



### ADDITIONAL OPTIONAL FEATURES

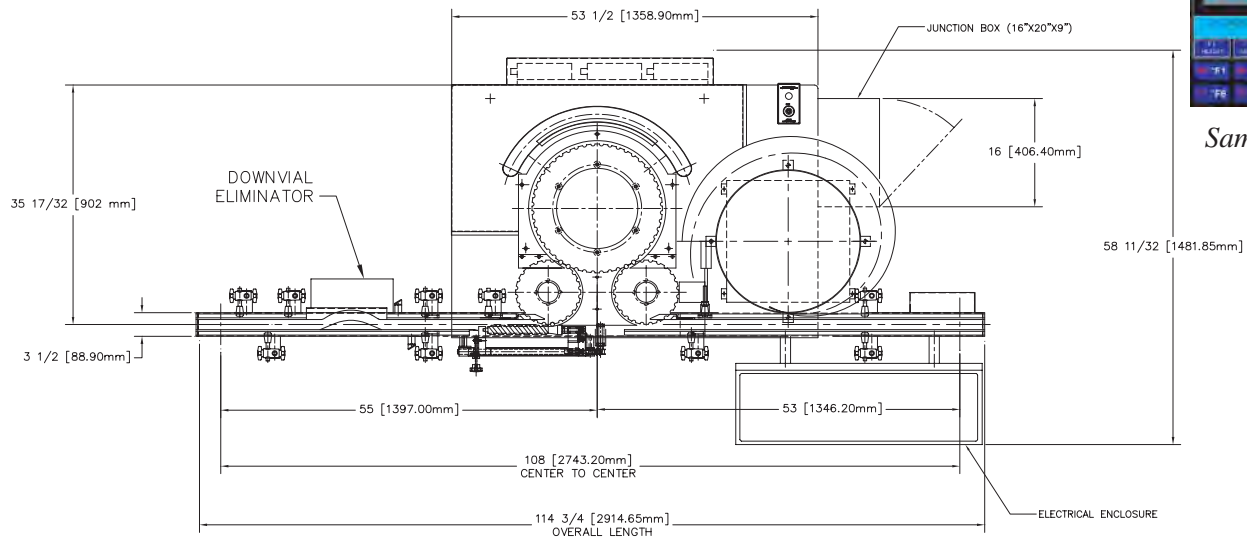
- Additional Conveyor Length
- Missing Stopper Detect
- Vial Counter
- Two Speed Transmission
- Electronic Volume Adjustment
- Automatic Bowl Height Adjustment
- Spare Parts Kit
- IQ/OQ/PQ Validation Protocols
- Explosion Proof Electricals

50 Schoolhouse Road  
Somerset, NJ 08873-1289  
USA

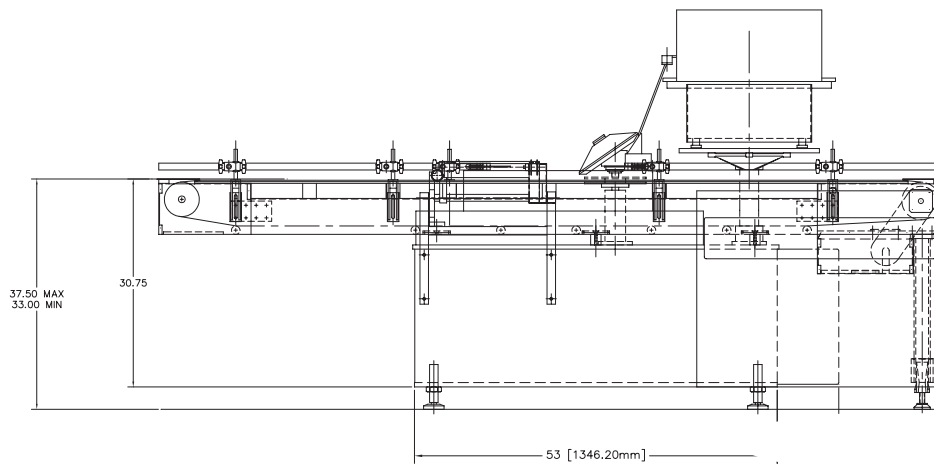


Phone: (732) 564-0400  
Fax: (732) 564-0444  
Email: sales@cozzoli.com  
www.cozzoli.com

# Specifications



Sample Display Panel



Model CR400-12 Standard

Dimensions shown are approximate and subject to change without notice

### Dimensions

- Setup: 116" x 60" x 48" (L x W x H)  
2946mm x 1524mm x 1219mm
- Crated: 144" x 72" x 72"  
3658mm x 1829mm x 1829mm
- Weight: 2500 lbs. (1136 kg) Net  
3500 lbs. (1591kg) Gross

	CR200/6	CR400/12
Filling Nozzles	6	12
Fill Volume	Up to 120ml	Up to 30ml
Valve Assemblies	3	3
Min/Max Container Diameter	1/2" to 2 1/4" (13mm to 57mm)	1/2" to 1 1/8" (13mm to 29mm)
Containers per minute	Up to 200	Up to 400
Container Spacing	2 1/2" (64mm)	1 1/4" (32mm)
Containers handled	Vials	
Closures handled	Stoppers Conventional Slotted	
Closure diameters	13mm to 20mm/28mm to 30mm	
Closure feeding	Vibratory Bowl	

*Cozzoli Machine Company is an international leader in the design, manufacture, distribution and service of precision cleaning, filling and closing systems in stand-alone or monoblock format. Since 1919 our company has been serving the pharmaceutical, biotechnology, diagnostic, cosmetic, and chemical industries.*

*Our Goal is to Exceed Your Expectations*

50 Schoolhouse Road  
Somerset, NJ 08873-1289  
USA



Phone: (732) 564-0400  
Fax: (732) 564-0444  
Email: sales@cozzoli.com  
www.cozzoli.com