



CR200 and CR400 - FILLING, STOPPERING MACHINE

The CR series is a continuous-motion filling and stoppering machine. Offering production speeds up to 200 and 400 containers per minute, this machine performs with outstanding fill accuracy $\pm .5\%$ or better, with either full or partial insertion of stoppers.

◀ www.cozzoli.com ▶

50 Schoolhouse Rd., Somerset, NJ 08873 | 732.564.0400 | Sales@Cozzoli.com

CR200/400

FEATURES

Compact sized, efficient with production and cost saving. It offers quick and easy changeover, one vibratory bowl that handles stopper sizes of 13 and 20mm or 20 and 28mm. When used with laminar flow, the CR series open flow-through design of the central star-wheel significantly lowers particle counts to well under GMP standards for use in Class 100 cleanrooms.

This PLC controlled machine features a stainless steel exterior with all liquid contact parts fabricated of 316L stainless steel and medical grade tubing to accommodate sterile requirements. It also provides missing container, make-up and back-up detection systems.

OPERATING PRINCIPLE

Containers enter the machine via the infeed conveyor, where they are transported single file into a Delrin timing screw where they are precisely spaced into star wheel pockets. Containers are then transferred into a larger main starwheel where the filling operation occurs. After filling, containers travel to the exit starwheel for stopper positioning and insertion. The continuous motion handling of the containers reduces machine wear, and provides for gentle handling of the containers.

STANDARD FEATURES

- Syringe Assemblies
- Nozzle Assemblies
- Valve Assemblies
- Filling Tubing
- 1 Set of Vial Change Parts
- Vibratory Bowl Stopper Feed Assembly
- Stopper Delivery Assembly
- Down Vial Eliminator
- Upstream Make Up Sensor System
- Downstream Back Up Sensor System
- Electronic Rate Indicator
- 9' Center to Center Conveyor Assembly
- 303/304 Stainless Steel Exterior Construction
- PLC Control
- DC Machine Drive
- NEMA 4, 220V, 60Hz, 1 Ph Electrical
- Full Color Operator HMI
- Password Protected Operating Parameters
- Lexan Enclosure

OPTIONAL FEATURES

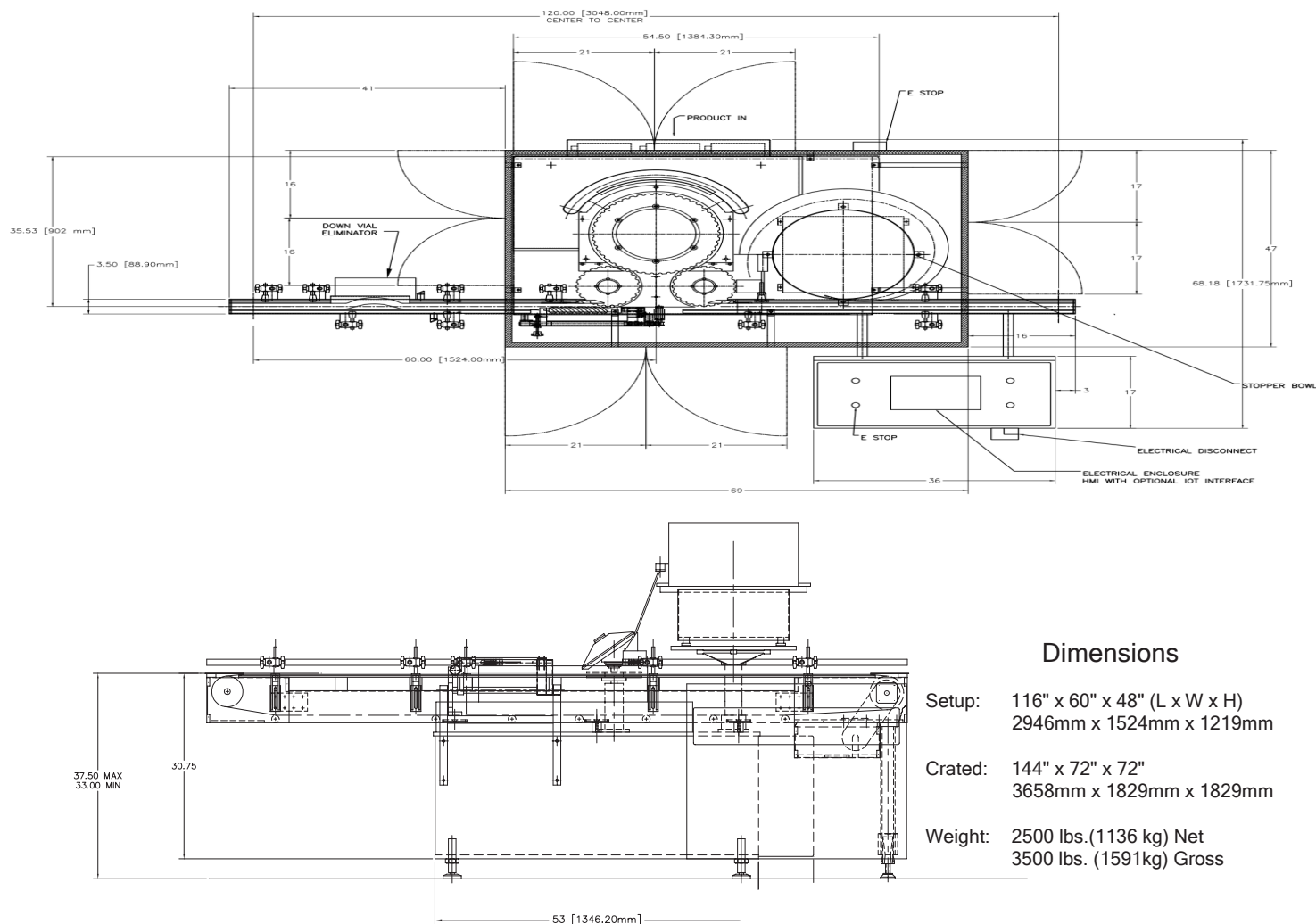
- Industrial Internet of Things (IIoT)
- Additional Change Parts
- Additional Nozzle Sizes
- Ethernet PLC Upgrade



ADDITIONAL OPTIONAL FEATURES

- Additional Conveyor Length
- Missing Stopper Detect
- Vial Counter
- Electronic Volume Adjustment
- Spare Parts Kit
- IQ/OQ/PQ Validation Protocols

Specification



Dimensions

Setup:	116" x 60" x 48" (L x W x H) 2946mm x 1524mm x 1219mm
Crated:	144" x 72" x 72" 3658mm x 1829mm x 1829mm
Weight:	2500 lbs. (1136 kg) Net 3500 lbs. (1591kg) Gross

	CR200/6	CR400/12
Filling Nozzles	6	12
Fill Volume	Up to 120ml	Up to 30ml
Valve Assemblies	3	3
Min/Max Container Diameter	1/2" to 2 1/4" (13mm to 57mm)	1/2" to 1 1/8" (13mm to 29mm)
Containers per minute	Up to 200	Up to 400
Container Spacing	2 1/2" (64mm)	1 1/4" (32mm)
Closure feeding		
	Vibratory Bowl	
	Stoppers Conventional and Slotted	
	13mm & 20mm or 20mm & 28mm	

Cozzoli Machine Company is an international leader in the design, manufacture, distribution and service of precision cleaning, filling and closing systems in stand-alone or monoblock format. Since 1919 our company has been serving the pharmaceutical, biotechnology, diagnostic, cosmetic, and chemical industries.

Our Goal is to Exceed Your Expectations

50 Schoolhouse Road
Somerset, NJ 08873-1289
USA



Phone: (732) 564-0400
Fax: (732) 564-0444
Email: sales@cozzoli.com
www.cozzoli.com