

*Consistent
Reliable
High Performance*

SW40 Stopper/Cap/Crimp Washer

Cozzoli Machine Company's SW40 Washer is a high production closure cleaning machine, designed for years of reliable operation. Using a PLC to control the wash cycle, the wash parameters can be programmed into the machine to control the sequence and duration of the wash steps. Up to 9 different wash recipes of 18 steps each provide for individualized customer requirements. All wash recipes can be password protected.

Operation

Stoppers, caps, or crimps are loaded into a steel basket that has a screened bottom, solid walls and overflow holes near the top. The basket is lowered to the washer manifold at the bottom of the drain basin. This manifold houses the water inlet, silicone inlet (for stoppers only) and bubbler holes.

Construction

The SW40 is equipped standard with three valves for washing stoppers. Only two are needed for washing caps and crimps. The 1" line is dedicated for liquid wash media, such as water for injection (WFI). The remaining two 1/2" lines are dedicated for clean-compressed air and siliconizing (for stoppers only). Materials of construction include 316L stainless steel basin and top cover, 316L stainless steel piping with sanitary connections, 316L stainless steel silicone reservoir, and the frame is 304 stainless steel exterior surfaces and frame.



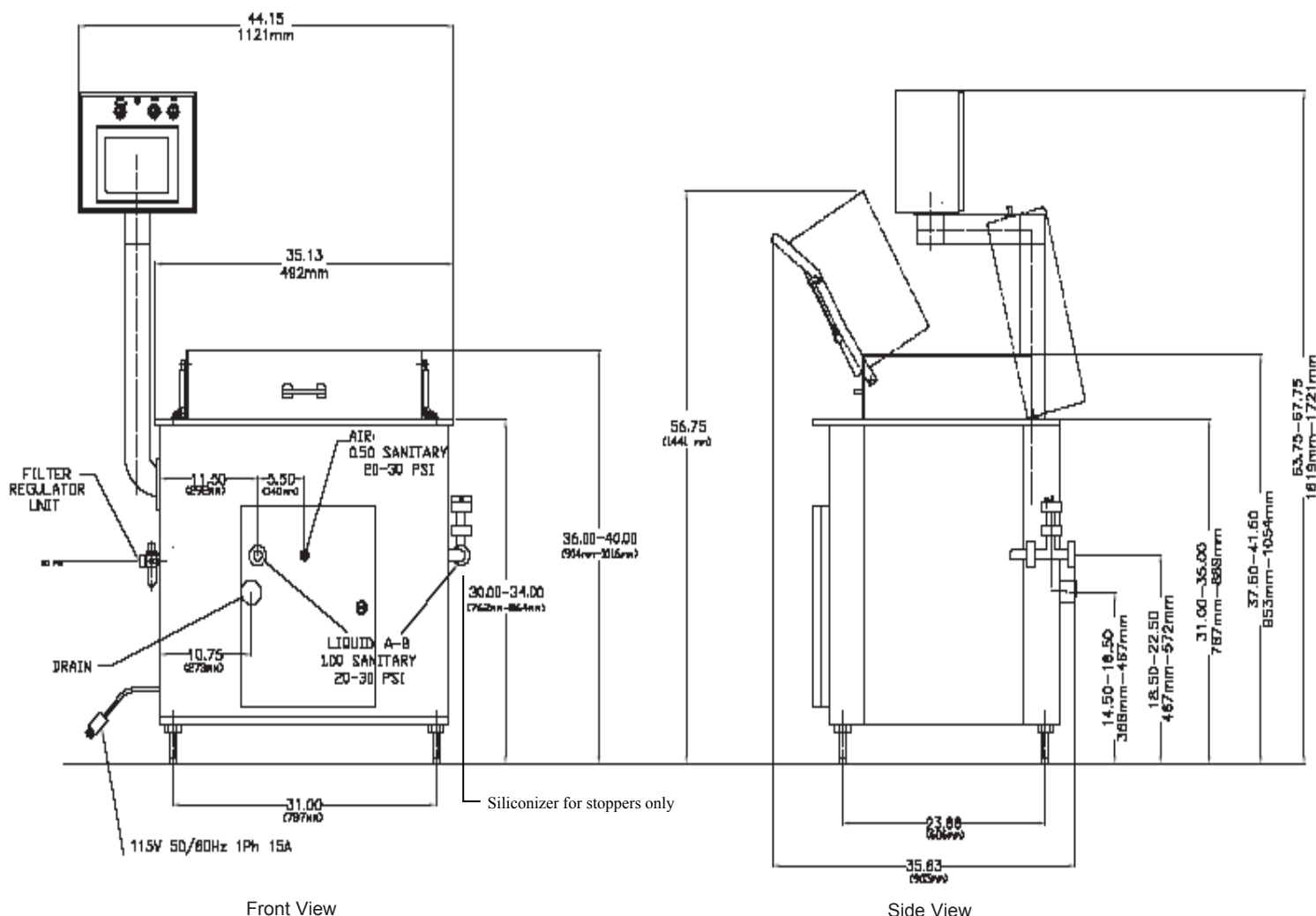
Easy to operate: simply place your closures in the bin, close the lid then select your pre-determined wash cycle.

Standard Features

- 304 Stainless Steel Construction
- 316L Wash Media Contact Parts
- 3 Diaphragm Valves with Teflon Seals
- Allen Bradley PLC with Panelview Display
- 115V, 60 HZ, 1 PH-NEMA 12 Utilities
- Top Cover Safety Switch



Specifications



Front View

Side View

AVAILABLE PROTOCOLS

IQ/OQ Validation Protocol - Written
 Factory Acceptance Test Protocol - Written
 PQ / Performance Qualification Protocol - Written
 IQ/OQ Validation Protocol - Execution
 Factory Acceptance Test Protocol - Execution

Options

Lid Lock
 Low Incoming Pressure Safety Switch
 Cycle Completion Annunciator
 EEPROM to Store PLC Program
 Alternate Electrical Configurations
 Spare Parts Kit

Weight & dimensions

Approx. Crated: 40"W x 51"L x 57" H
 1016mmW x 1295mmL x 1447mmH
 Approx. Crated Weight: 950 lbs. or 431 kg.

Cozzoli Machine Company is an international leader in the design, manufacture, distribution and service of precision cleaning, filling and closing systems in stand-alone or monoblock format. Since 1919 our company has been serving the pharmaceutical, biotechnology, diagnostic, cosmetic, and chemical industries.

Our Goal is to Exceed Your Expectations

50 Schoolhouse Rd.
 Somerset, NJ 08873
 USA



Phone: (732) 564-0400
 Fax: (732) 564-0444
 Email: sales@cozzoli.com
 www.cozzoli.com